



SAFETY SYSTEMS FOR RIDING AND EQUESTRIAN SPORTS



GROUND SYSTEMS | WALL SYSTEMS | BOUNDARY SYSTEMS





PERFECTLY LINED-UP

EQUI Professional UG carries in its name what the successful enterprise is all about: Horses, their professional training and successful marketing. In acquisition as well as in sales of high-class competition horses you will find EQUI Professional a competent partner. Laura Körting, our Managing Director, a successful dressage rider herself, defines a good mediation as follows: Among several talented horses find the one that perfectly harmonizes with the client. The dressage horses attended to by EQUI Professional are all trained and presented in tournaments by Laura Körting. Particularly for young horses without competition experience it is beneficial to start their sports career under the guidance of an experienced dressage rider.



KNOW-HOW AND AUTHORITY

It is of utmost importance to provide horses with an environment equivalent to their natural habitat and with the highest degree of safety possible. Wall elements for boxes and flooring made from rubber granulate will be skid-proof and gentle on the joints thus providing extraordinary comfort for horse and rider. With their innovative concept for the equipment of stables for saddle horses Conradi+Kaiser deliberately serves the special demands of keeping horses. As an officially trained and qualified horse keeper and a successful dressage rider as well, Anja Kaupmannsennecke is very much at home in riding stables and therefore knowledgeable about the particular needs of horses. Her passion and know-how are reflected in all products of Conradi+Kaiser.



NATIONAL AND STATE TRAINING CENTRE OF RHINELAND-PALATINATE

The needs of horse and rider are always the focus of interest at Conradi+Kaiser. We obtain our competence and know-how from the many years of work with the horses of the Rheinland-Pfalz Centre of Proficiency. The centre is a large scale riding arena in the northern part of Rheinland-Pfalz, which we operate for more than ten years. The development of each single product refers to this experience. Together with Anja Kaupmannsennecke, Laura Körting and other internationally successful horse riders we are continuously at work to provide for as natural as possible horse-keeping also in the field of top-performance sports.

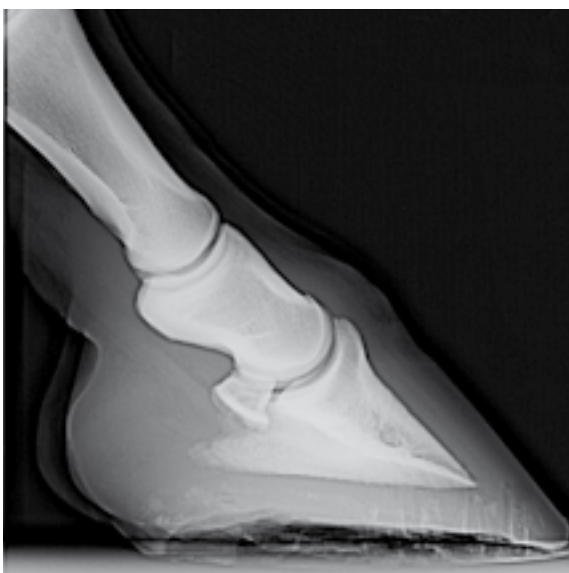




GROUND SYSTEMS

BY CONRADI + KAISER





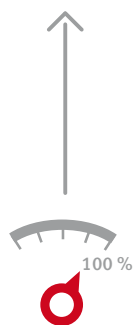
YOUR ADVANTAGE: HEALTHY HORSES

The complex locomotors system of horses is subjected to considerable strain during their whole lifetime. Particularly in the field of competition horses the physical stress on tendons and ligaments is very high. The most common cause of tedious injuries is squashy, rough or even slippery ground. In close cooperation with veterinarians and physiotherapists Conradi+Kaiser have developed ground systems that absorb the weight of the animals and thus minimizes the point loading on hooves and joints. Standing on a slightly springy surface obviates muscular hardening and relieves shoulder joints, carpal joints and hock joints. Easy and sanitary cleaning of these systems diminishes the development of microbes, which in turn prevents the formation of inflammations and putrefaction of the hooves.



YOUR ADVANTAGE: COMFORT

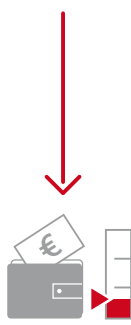
To feel comfortable inside the box - the highest demand of horse and rider. The springy ground systems for horse stables ensure the highest degree of comfort for the sensitive animals and are very hard-wearing at the same time. Thus, for example, the animals can lie down and get up again in all comfort, without slipping or hurting themselves. Moistness and urine are channelled directly to the bottom side of the slabs - the horses stand permanently dry and soft nonetheless. The sound-absorbing material inhibits the intended acoustical effect when horses kick out against the walls of their boxes or scratch the ground with their hooves. As a result horses will soon abandon this undesirable whim. Considering products from Conradi+Kaiser you will invest in a ground system which is comfortable and beneficial for the animals health at the same time.



BENEFITS



QUALITY



COSTS

YOUR ADVANTAGE: COST-EFFECTIVENESS

The anatomy of horses is in favour of movement in the open air. In their natural environment they move forward steadily and slowly while grazing. In the conventional indoor housing of horses however, allergic reactions and respiratory diseases may occur. By using the ground system of Conradi+Kaiser you can reduce the cost of bedding and the resulting work by up to 70%. The improvement of the air quality is a lasting investment in the health of your animals. Conradi+Kaiser have the perfect ground systems also for other areas, in which your horses remain frequently. For horse walking units and paddocks we offer low-wear and non-slip systems, that will withstand continuous loading without damage.



In horse stables without drainage slopes we propose permeable ground systems as a solution. Underneath the slabs a gulley should be installed, in order to allow ammoniac liquids to be removed from the stables immediately after they have seeped through the permeable slabs.



BESTSELLER



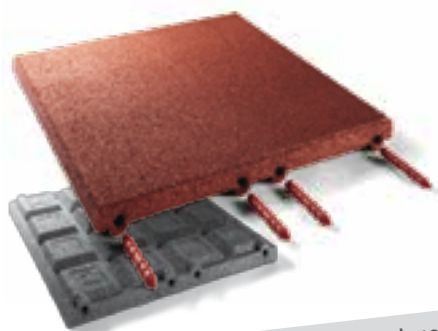
UNIVERSAL SLAB 40

500 x 500 x 40 mm

The Universal Slab is a higher compressed elastic slab. It is very durable and reduces the risk of injuries and breakages.

Due to its barrier-free use, its slip-resistance and the easy cleaning, it is perfect for stable areas.

- Permeable
- Slip-resistant
- Reduction of litter
- Soft bedding layer: joint-friendly
- **Areas of application:**
Stables / boxes



+ Optional: Further densified



SPRINGY SLAB

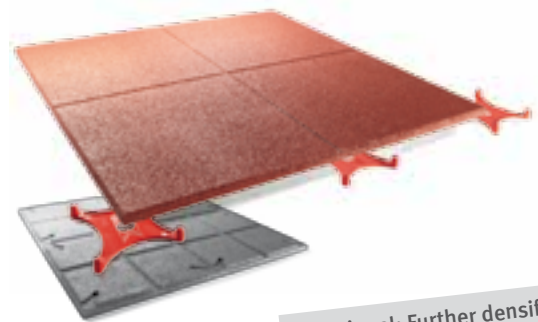
500 x 500 x 45 mm

The 45 mm slab is particularly soft. It provides a high degree of comfort inside boxes, not only for older horses. They are bedded soft and warm because of the insulating quality of the rubber granulate. Special advantage: The necessary straw bedding is reduced by about 70%. The slabs are also convincing because of their high degree of surface adhesion, which helps the horses to get up.

- Permeable
- Reduction of straw bedding
- Quick installation
- **Areas of application: Boxes**



Springy ground systems by Conradi+Kaiser minimize the strain on hooves and joints. Moreover, they offer skid resistance in boxes, horse transporters and trailers. The quantity of bedding is also reduced to a minimum, which in turn makes for better air quality. Less exposure to dust will reduce respiratory diseases.



SPRINGY SLAB 30

1000 x 1000 x 30 mm

The large-sized springy slabs are durable, hard-wearing and weather resistant. They can be layed on hard subsurfaces only.

- Top price-performance ratio
- Reduced straw bedding
- Form-closed interlocking by four-pin clips
- **Areas of Application:**
Boxes, paths and lanes



+ Optional: Further densified



SPRINGY SLAB 45

1000 x 1000 x 45 mm

Because of the drainage layer underneath these elastic slabs are particularly springy and permeable. Due to their thickness of 45 mm these slabs provide stronger insulation, which in turn makes for a more comfortable floor temperature and a more stable footing. Can be layed on all subsoils.

- Permeable
- Reduced straw bedding
- Form-closed interlocking by four-pin clips
- **Areas of Application:**
Boxes and washing-bays

Springy ground systems by Conradi+Kaiser minimize the strain on hooves and joints. Moreover, they offer skid resistance in boxes, horse transporters and trailers. The quantity of bedding is also reduced to a minimum, which in turn makes for better air quality. Less exposure to dust will reduce respiratory diseases.



+ Optional: Further densified



SPRINGY SLAB

1000 x 1500 x 45 mm

Heavily strained areas in equestrian facilities can be durably paved with the elastic slab sized 1000 by 1500 by 45 mm. The large format provides a high degree of position stability, preventing displacement of the individual slabs even without connecting clips. Bonding here and there, however, is recommended.

- Permeable
- Largest slab in the product line: Quick laying and high degree of position stability due to heavy net weight.
- **Areas of application: Boxes, paths and lanes and washing-bays**



STABLE SLAB 18

1000 x 1500 x 18 mm

The innovative flooring made from hard-wearing rubber is easy on the hooves and joints of companion animals. It is consistently soft all year long and is normally installed in stables and in veterinary clinics.

- Impermeable
- Less respiratory diseases due to less straw bedding
- Highly resilient
- Trafficable for agricultural machines
- **Areas of application:**
Stables, boxes



In stables with a drainage slope there is the possibility to install a gulley next a side-wall. In this case a skid-resistant and non-permeable ground system is the choice. Urine and other liquids are drained over the surface and directly removed from the stable. Thus there will be no development of unpleasant odours.



STABLE MAT 45

1000 x 1000 x 45 mm

The springy slab 1000mm by 1000mm by 45mm ensures an area pavement, which is soft and at the same time skid resistant and largely impermeable. The mat consists of two components - the upper layer is a sealed rubber surface, the lower one is made from high-quality recycling rubber granulate.

- Very comfortable and at the same time impermeable
- Reduction of straw bedding
- Form-close connection with four-pin clips
- **Areas of Application:**
Stables and boxes



DOUBLE-T PAVEMENT

200 x 160 x 43 mm

The double-T paving stone is the true classic in the area of flooring for stable alleys. It is easily swept and ensures a durable homogeneous area pavement. The small format stone allows laying in bends.

- Easy and quick laying
- Form-close interlocking
- Skid resistant
- **Areas of Application: Stable alleys and connecting paths.**

The higher densified version is also well suited for horse walking units.



Paths and alleys for horses have to meet various requirements. On the one hand the ground systems should be skid-resistant and slightly springy, so the animals can move in comfort and easy on the joints. On the other hand they should be easy to clean and fit for traffic with agricultural machines, if required.



DOUBLE-T PAVEMENT SLABS

565 x 500 x 23/43 mm

Even quicker and simpler is the laying of the double-T slab. The large format elements closely interlock with each other and are, therefore, a valid alternative for repair or replacement of damaged floorings. If using the 43mm thickness these slabs can be combined with double-T stones and appropriate supplementary stones.

- Available in two thicknesses:
43mm and 23mm
- Anti skid
- **Areas of application:**
Paths and Alleys

Wet floors imply a high risk of injury for horses. Their horseshoes let them skid easily on wet surfaces. The results are fractures, ruptures and strain traumata. Conradi+Kaiser offer ground systems and flooring, that drain water quickly and thereby minimize the risks of skidding and getting hurt. Also, if installed in solaria-bays, these springy flooring systems provide non-skid and comfortable surfaces for the horses.



++ NEW ++

Solid rubber

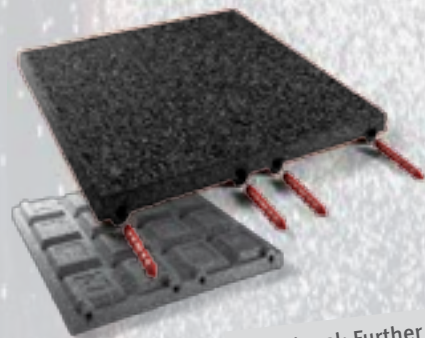


DOUBLE-T IMPERMEABLE

160 x 200 x 43 mm

As a flooring for the inside of washing bays it is the double-T paving stone made from solid rubber, which is principally used. It is impermeable and skid resistant. Furthermore, it provides a durable surface, resistant to urines, and safe for horses' movements. Simple cleaning and resulting cleanliness make it an indispensable product for equestrian establishments.

- Impermeable
- Surface resistant to abrasion
- **Areas of application:**
Washing-bays



+ Optional: Further densified



SPRINGY SLAB EXTREMELY PERMEABLE

500 x 500 x 40 mm

Apart from the joint-friendly qualities of stable mats made from rubber granulate, the springy slab is also convincing by its high permeability for liquids. In particular ammoniacal liquids seep through these slabs quite quickly. Boxes fitted with these highly permeable slabs are used without straw bedding.

- Highly permeable
- **Areas of application:**
Washing-bays

Rain for days on end often turns paddocks and free stall barns into real mud-holes. The horses then lack dry patches to rest their hooves. Mud, in combination with horse dung and urine is a breeding ground for bacteria of all kinds. Furthermore, deep mud is an additional strain on the tendons.



++ NEW ++



SYSTEM SLAB PERMEABLE

195 x 195 x 20/70 mm

Base sheet: 800 x 400 x 60

This system slab by Conradi+Kaiser consists of two components: A solid slab made of synthetic material, which serves as a firm foundation layed directly on the subsoil and capable of supporting the heavy weight of horses and agricultural machines. A skid-resistant slab on top made from rubber granulate makes for safe joint-friendly movements of the animals as well as for a pleasant visual appearance resembling a rustic style pavement.



The elastic slab is simply plugged in.

ADVANTAGES

- permeable
- quick and easy laying directly on the ground soil
- costly preparation of the subsoil are not necessary (e.g. frost-resisting bearing layers)
- attractive price/performance ratio
- very robust: trafficable for agricultural machines
- bears the weight of horses and farm animals
- non-skid rubber slabs are easily plugged onto the foundation plates
- No bacterial growth due to the absence of stagnant moisture on the slab surface
- **Areas of application:**
Paddocks

The surfaces of riding arenas have to meet very particular requirements. Particularly on the outer track the sand is dissipated quite soon and has to be replenished regularly. Using the new base slab by Conradi+Kaiser the surfaces of riding arenas are durably reinforced and running cost can be reduced.



SYSTEM SLAB BASE SLAB

800 x 400 x 60 mm

The installation of a frost-resistant subsoil is one of the most cost-intensive investments when constructing a riding arena. By using the system slab of Conradi+Kaiser you will lay a cost-effective substructure under the riding surface, which will offer stability for the horses, frost-resistance and optimum stabilization of the ground.





ADVANTAGES

- quick and cost-efficient laying - also for large areas
- the ideal ground stabilization for riding arenas and paddocks
- extremely robust
- simple laying into the subsoil
- no costly preparation of the subsoil (e.g. frost-resistant bearing layers)
- **Areas of application: Paddocks and Horse walking Units**

On paddocks and connecting lanes the grass is often heavily strained by the impact of hooves and the weight of the horses. Honeycomb-type paving slabs made from rubber granulated material make the ground firm, provide sure footing for the horses and the grass continues to grow, recovers much quicker. The paddocks can be used for a longer period each year.

++ NEW ++



+ Optional: Further densified



GRASS PAVING SLAB

1000 x 1000 x 45 mm

1000 x 1000 x 65 mm

Grass paving slabs made from rubber granulate material are the perfect choice for paddocks or for the partial stabilisation of grazing meadows, underneath water drums for example, or in entrance areas. They can be embedded into the ground without laborious preparation of the subsoil and provide sure footing - without mud and on a springy surface, that is easy on the hooves.

- no costly preparation of the subsoil
- simple and form-locking laying
- non-skid
- frost-resistant
- **Areas of application: Paddocks, ground stabilisation and foundation of riding arenas**

The honeycomb-type grass paving slab by Conradi+Kaiser is also perfectly suited as a stabilising flooring underneath riding arenas. The sand in the arena is spreaded evenly in the small chambers of the rubber granulate slab. As a result less sand is needed for the construction of a riding arena. The slab beneath the sand surface cushions the movements eases the strain on the horses joints.

» Considerably longer life period of the riding arenas



++ NEW ++

Solid rubber



DOUBLE-T IMPERMEABLE

160 x 200 x 43 mm

The solid rubber double-T stone is impermeable, extremely abrasion-proof and wear resisting. It has been conceived for heavily stressed surfaces in areas where horses are kept. The small format stones can be easily laid in radiuses and they have a strong interconnecting capacity. In horse walking units the double-T stones are a convincing solution because of their elasticity and easiness on the joints.

- skid resistant
- easy to keep clean
- capable of bearing agricultural machines
- **Areas of application:**
Horse walking units

Floorings, which are easy on the joints, support a sustained health of horses. Particularly in horse walking units the animals must be able to move without skidding and without fear. In order to relieve the point loading on the joints, a springy ground system is needed. The wear-resisting ground systems by Conradi+Kaiser are the optimal solution for the heavily stressed application in horse walking units.



Further densified



DOUBLE-T HIGHER DENSIFIED

200 x 160 x 43 mm

The double-T is the classic in the area of flooring for stable alleys. It is easy to sweep and ensures a durable homogeneous surface stabilisation. The small format stone allows the design of curved surfaces.

- Quick and easy laying
- Form-locking interconnection
- Skid-resistant
- **Areas of application:**
horse walking units





WALL SYSTEMS

BY CONRADI + KAISER





YOUR ADVANTAGE: SOUND-ABSORBING

Walls in riding stables are subject to heavy stress as well. Hooves are kicking out against partitioning walls or against concrete. The risk of injuries increases for the horses. The wall elements by Conradi+Kaiser have a sound-absorbing surface, moreover, it is slightly springy, thereby providing lasting protection for the horses' joints and for the wall elements as well. The kicking out against the stable walls will cease before long, because the desired acoustic effect fails to appear.



YOUR ADVANTAGE: KICK-ABSORBING

Kicking out against stable partition walls or against concrete is not only very noisy, it can be quite dangerous for the delicate joints of the animals. The wall elements by Conradi+Kaiser absorb the kicks with an additional slight resilience, when horses kick against them with full power. This reduces the risk of injuries, also when a horse cramps itself in its box.



YOUR ADVANTAGE: COST EFFECTIVE

Rubber partition walls are an investment in the future: Almost indestructible and moreover easy to clean they will be functionally and optically immaculate even after years. The main advantage: Laborious maintenance work is unnecessary. Simply spray-wash them with a high-pressure cleaner - shiny again. Time-consuming painting of the elements becomes obsolete.



++ NEW ++

The stable partition wall element is convincing because of its high usefulness. When horses kick out against the partition walls, it will be almost noiseless and because of the sound-absorbing effect for the horses it will most probably cease altogether before long. The risk of injury decreases accordingly.

The absolutely innovative partition walls are the fast-seller for riding stables! Only a few weeks after the introduction on the market, operators of riding arenas have signalized their satisfaction. These stable wall elements are one of the rare real innovations in the furnishing of riding arenas. They imply an upgrading of the entire installation and ensure a pleasant appearance.



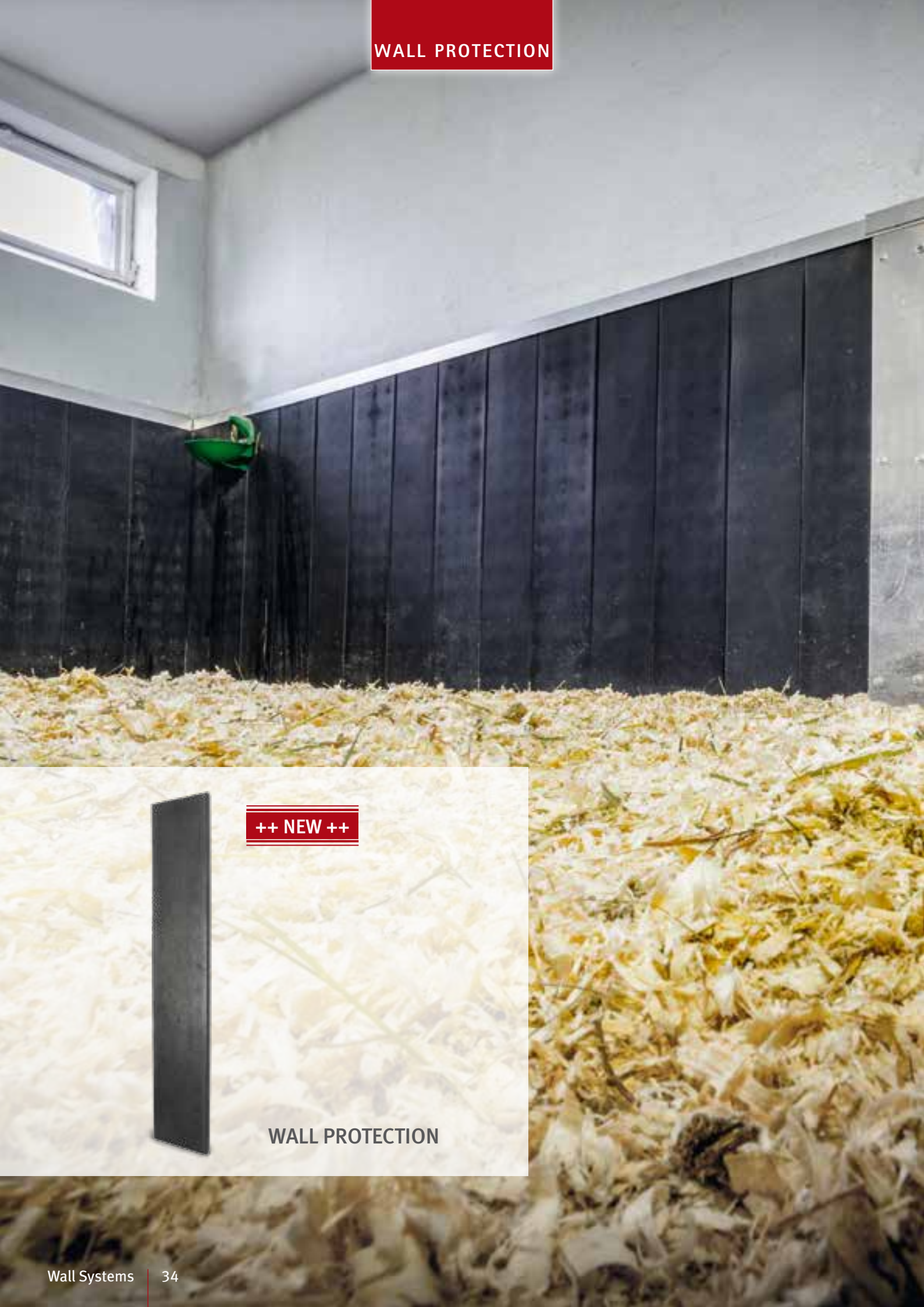
STABLE PARTITION WALL ELEMENT

135 x 38 x 1330 mm

For these wall elements a metal core is coated with new caoutchouc. This is the basis for the stable walls of Conradi+Kaiser. They offer a high degree of stability, are sound-absorbing and easy to clean. The wall element of new caoutchouc is simply inserted into the existing partition systems - a quick and easy upgrading of stables.

- easy to clean or to paint, if required
- insulating
- simple installation
- permanent high-quality appearance of partitions and stable alley

WALL PROTECTION



++ NEW ++

WALL PROTECTION

Unfortunately concrete walls imply a high risk of injury for horses, when they kick against them with their hooves or joints. The new wall panelling by Conradi+Kaiser offer sound- and shock-absorbing protection in horse stables. They are a convincing solution because of their simple installation and high effectiveness.



WALL PROTECTION

240 x 40 x 1290 mm

Kicking out with their hooves against concrete walls is not only very noisy, it is also very dangerous for the delicate joint of the horses. In order to protect the walls as well as the hooves of the horses rails will be fixed to the walls, which will hold the wall protection elements of Conradi+Kaiser. Such an installation will provide lasting protection.

- easy to clean, can be painted, if required
- insulating quality
- simple installation
- long-lasting high-quality appearance of stables and stable-alleys

Off-the-shelf fence systems for paddocks provide the horses with generous free moving space beside their neighbours. In order to avoid injuries when playing or wrangling Conradi+Kaiser offers an effective rubber fence-facing.

++ NEW ++



Paddock Fence Facing

1430 x 9 x 1000 mm

From now on paddock fencing can be upgraded in a simple way to resist kicking out. The fence facing will prevent injuries from kicking. The facing consists of impermeable new caoutchouc so that the kicking out against these partitions will be almost noiseless.

- Simple installations on existing fence systems
- Impermeable soft material
- Frost resistant
- **Area of application: Paddocks**

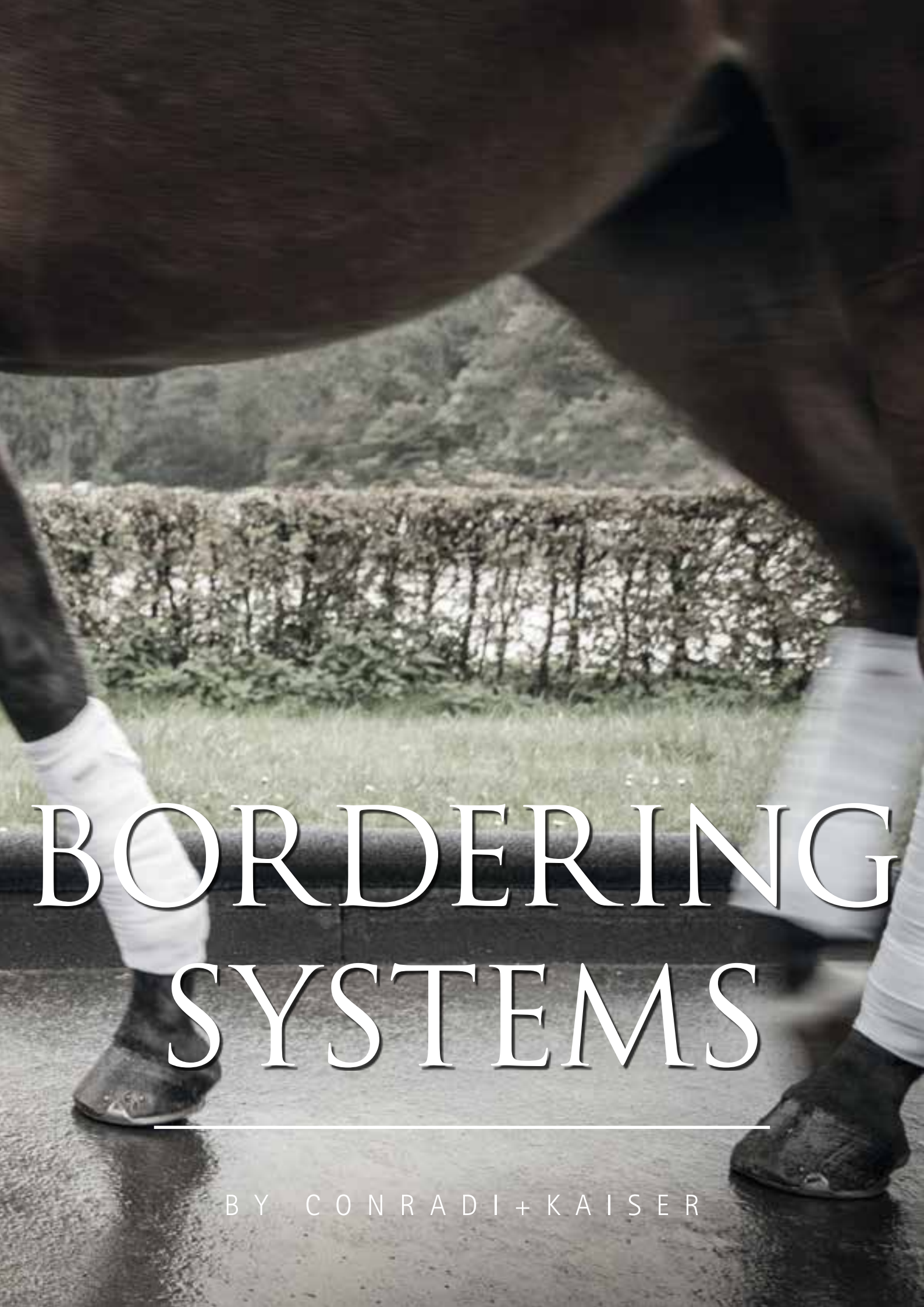


**Paddock
Protection**



SIMPLE MOUNTING





BORDERING SYSTEMS

BY CONRADI + KAISER





SAFE BORDERING OF RIDING AREAS

Durable and safe bordering of riding areas is essential for the well-being of horse and rider and for their safety as well. Particularly when tumbling, injuries are often caused by sharp-edged delimitations. Bordering elements by Conradi+Kaiser, made from rubber granulate, have an elastic surface finish, making them perfectly suitable for equestrian sport installations, where extreme robustness is required and awareness of possible accidents at the same time.



SAFE BOUNDARIES FOR LANES AND ALLEYWAYS

They separate the inside from the outside and provide for gentle and gracefully designed transitions. The bordering systems made from recycled caoutchouc reduce the risk of injuries for horse and rider, or, in the case of palisades, can serve as a comfortable seating at the same time. Using lane bordering systems by Conradi+Kaiser, your creative freedom is without limits.



ARRANGEMENT OF SAFE RIDING FACILITIES

The cubes by Conrado+Kaiser are the little heroes in every-day use. They are helpful in all places, where animals could hurt themselves stepping onto sharp-edged or hard objects. The plant containers or seating made from rubber granulate don't take offence at lighter or even harder contacts and keep their shape.



Chain element 1000

1150 x 150 x 400 mm

Maximum safety for horse and rider can be achieved by the aesthetically pleasing design element for the bordering of riding arenas. These elements are smoothly interlocking and dimensionally stable because of their heavy weight. For horse hooves they are not a rigid barrier between the riding arena and the surrounding and even in the case of a downfall the weight of horse and rider is slightly cushioned.

- High dimensional stability
- Large scope for creativity
- Minimising the risk of injuries
- Quick installation on hardened and loose subsoil
- **Areas of application: Riding arenas, connecting lanes, guiding systems**

Bordering systems of riding arenas should not comprise additional risks of injury for horse and rider. They must, however withstand point loadings and therefore have an appropriate stability. Particularly the paths at the outer tracks are subject to continuous strain. Conradi+Kaiser offers an extensive program of boundary systems for riding arenas, which remain dimensionally stable even after years, and which reduce risks of injury because of the material they are made of.



Chain element 650

650 x 250 x 400 mm

The chain element 650 can be used in all those cases, where a flexible bordering system is required, for instance when small radiuses are necessary. It is often used for lunging rings, for example, and for horse walking machines. The moulded concave channelling makes it even more stable. The individual elements are connected to one another by assembly tubes.

- High dimensional stability
- Soft surface, no splintering of the material
- Quick installation, small radiuses possible
- **Areas of applicability: Riding arenas, lunging rings, horse walking devices**



Palisade

Ø 250 x 400/600/800/1000 mm

Safeguarding of slopes and surroundings for riding areas are the typical fields of application for the palisades. The elegant design with the notched groove makes possible a tight interlocking connection of the individual palisades. The soft material makes a comfortable seating.

- Integrated soil anchor for high stability
- Five palisades per meter
- High stability when used for safeguarding of slopes
- **Areas of application:**
Area for spectators, planting areas and slopes



Formschlüssige Verbindung durch Hohlkehle.

Safeguarding of slopes is particularly important in areas, where equestrian sports take place, because many riding facilities have to cope with a hillside situation. Whether in the areas of the spectators or in those of the horses, Conradi+Kaiser offers numerous possibilities of safeguarding for slopes, which also take into account the delicate joints of horses.



Backing palisade

300 x 150 x 1000 mm

The long soil anchor of the backing palisade provides for a high rate of stability on slopes. Riding arenas or spectator areas can therefore be integrated directly into hillside slopes. The inherent stability of the material is perfectly suitable for riding arenas, because of the flexibility of the rubber granulate, prevents serious injuries of the horses legs.

- very robust
- abrasion resistant surface
- **Areas of application: Riding areas and spectator areas**



Lange Bodenanker = hohe Stabilität am Hang.



We want riding areas to last for a long time. This can only be ensured by solid bordering systems. Besides Conradi + Kaiser's Chain Elements, our Block Steps are also perfect to border dressage arenas and riding areas.



Block Step

1000 x 300 x 150 mm

C+K's Block Step is a real all-rounder. It can be installed in two different ways: narrow side up or wide side up, and it is often used as a dimensionally stable and permanently safe border stabilisation for riding areas.

Because of its high own weight, it withstands heavy weight loads, e.g. from surface maintenance devices.

- High dimensional stability
- Soft surface, no splintering
- Quick installation
- form-locked connection
- High own weight
- **Application: riding arenas, stairways**



Concrete lane enclosure with granulate coating

1000 x 60/80 x 295 mm

Sometimes the enclosure of lanes demands a higher degree of stability. Lanes which are constantly under high strain should be stabilized by concrete enclosures. In order to avoid injuries, the concrete border stone comes with a skid resistant coating of rubber granulate.

- High degree of stability because of the concrete core
- Quick installation
- Injury inhibiting surface
- **Areas of application: Lanes and lawn areas**



Granulate coating

1000 x 80 x 80/100 x 100 mm

Existing projecting border stones imply a high risk of injury for humans and animals. They are tripping hazards and horses hooves can easily skid on the narrow concrete strips. These edges can quickly and safely be improved by the casings of rubber granulate in order to avoid bad injuries.

- Supplementary casing of existing bordering elements.
- Anti-skid property
- Quick and easy installation
- **Areas of application: Lanes and lawn areas, bordering of riding arenas**

Paths and lanes within riding installations have to bear constantly the weight of the animals and therefore need stable enclosures. Bordering elements made from rubber granulate are particularly well suited for this application, because they do not only have a high dimensional stability, but they are also skid resistant. The soft material prevents the horses' hooves to slip off as well as scrapes or worse injuries by the rigid concrete.



Lane bordering

1000 x 50 x 250 mm

Besides the bordering of riding arenas connecting lanes and lawn areas also need to be enclosed, so that they might be easily looked after on the one hand, and provide for the highest possible safety for the animals on the other hand. The lane enclosing elements made from rubber granulate are durably weather resistant, quickly installed and provide flexible protection for hooves, for instance against slipping off or against spraining.

- Flexible bordering
- Optional available with reinforcing steel to create curves
- **Areas of application: Lanes and lawn areas**



Borderline Posts

Ø 200 x 600/900 mm

With these borderline posts areas within riding installations may be separated permanently or temporarily. Installed as a stand-alone it may for instance close outdoor stable alleys for motorcars. Combined with a stainless steel chain it makes an attractive design element around riding areas.

- Can be temporarily removed if required
- Reflecting strip and chain fastening optional
- Soil anchor included
- **Areas of application: Riding areas, stable alleys, spectator areas, parking areas**



Pretty things are often rumoured to be impractical. The design elements by Conradi+Kaiser are positive proof of the contrary: They embellish riding arenas, lanes and outdoor areas. And moreover, they do not only look robust, they really are extremely durable, in spite of their little own weight.



Signpost

Ø 220 (oben)/Ø 350 (unten) x
H 800 mm

Particularly during horse shows the temporary positioning of guide and information signs becomes necessary. For this purpose the signpost of Conradi+Kaiser is the perfect choice. Thanks to its wide base it is self-supporting and stable and does not mind minor contacts by horse-trailers or hooves.

- Temporary positioning
- Guidance and information on event grounds
- **Areas of application: Lanes, area limits, parking areas, show-ground information.**



Luminous Bollard

Ø 150 x 850 mm

During the dark season open air riding grounds are difficult to use. This can be changed immediately with luminous bollards installed along the perimeter diffusing indirect lighting. In particular shy and unruly horses like this indirect lighting and are less easily startled.

- Slim design
- Illuminant at your choice
- Quick installation
- **Areas of application: Riding grounds, lanes and stable alleys**

Appealing seats on the perimeter of the show-ground can be provided using the cubes and polygons by Conradi+Kaiser. These elements made from rubber granulate look great, dry quickly and virtually keep themselves clean. Perfectly suitable for riding arenas, because even delicate hooves are relatively safe when kicking out against these elements.



Cube

400 x 400 x 400 mm

The cube is a real all-rounder, because it is virtually all-purpose. Whether as a mounting step in riding arenas and in stable alleys, or just as a seat, the cube is visually appealing anywhere. And the best of all: Its heavy weight precludes that someone accidentally takes it along, or that horses turn it over while being mounted or hurt themselves.

- Shock-absorbing
- Seating accommodation
- Mounting aid
- **Areas of application: Riding arenas, stable alleys, spectator areas**





Cylinder

Ø 445 x 450 mm

Rubber granulate is the perfect material also if presented in cylindrical shape: As a stylish complement to the cube numerous applications can be found for the cylinder on riding grounds. Examples are mounting aids or seating accommodations around the show ground. The elasticity of the material reduces the risk of injuries for horses.

- Shock-absorbing
- Seating accommodation
- Mounting aid
- **Areas of application:**
Show-grounds, stable alleys,
spectator areas



Zylinder mit Bodenanker.
cylinder with ground anchor.

During the transport in a horse trailer the joints of horses are under particular strain, because the bumpiness of the road has to be counterbalanced. All around riding installations kerb stone ramps by Conradi+Kaiser are therefore used to facilitate rolling onto a kerb.



Ramp

1000 x 250 x 45 mm

Horses should always stand on the trailer calm and at ease - this is prerequisite for relaxed driving. Ground beams or kerb stones are absorbed in a feathery way using the ramp by Conradi+Kaiser. Thus, the animals stand relaxed and their joints don't have to counterbalance jerky movements.

- Shock absorbing
- Easy to lay
- Easy on tyres and rims
- **Areas of application: Kerb stones, drive ways, connecting lanes**





In equestrian centres, animals can easily get injured and vehicles can easily get damaged in many situations. In addition to the flooring- and wall-systems, Conradi+Kaiser offers perfect solutions for the equipment of equestrian centres, in order to make them safe and animal-friendly.



Border-protection

1000 X 120 X 120 mm

The border protection covers rough edges, so that animals are protected against abrasions even in narrow stable aisles. Furthermore, it protects cars and horse trailers from scratching.

- Simple installation:
Gluing on house-corners and ledges
- Soft surface, no splintering
- **Areas of application: Riding arenas, Stable aisles, car parks**

Working with horses includes to many everyday situations, in which the horses walk along walls. Impact Protection Strips on these walls can safeguard the sensible animals from injuries.



Impact protection

1000 x 120 x 25 mm

Scratches and scrapes on car doors are mostly caused by bumping them against walls. Conradi+Kaiser's Impact Protection perfectly prevents such little damages. It gets fixed onto the walls in a line and thus provides a shock-absorbing surface. Needless to say that several elements can also be installed above one another.

- Shock-absorbing
- Simple installation
- Dimensionally stable
- **Areas of application: Car parks, Stable aisles, riding areas**







A tall, slender plant with white flowers is planted in a dark, textured floor vase. The vase is positioned in front of a large window with horizontal blinds. The plant's reflection is visible in the window. The text "FLOOR VASES" is overlaid in large white letters, and "BY CONRADI + KAISER" is at the bottom.

FLOOR VASES

BY CONRADI + KAISER



Vase linea

500 x 500 x 1000 mm

The vase linea with its purist and modern appearance presents itself as a durable design element anywhere on riding facilities. With an abundant floral arrangement it is aesthetically pleasing on a show-jumping ground as well as on a terrace or in a reception area.

- Temporary removable if required
- Modern
- Permanent service in outdoor areas
- Low-maintenance and frost resistant
- **Areas of application: Riding arenas, stable alleys, spectator areas**



+ Optional: Stainless Steel Base

Vase linea

500 x 500 x 750 mm

The mid-size variant as well is an absolute eye-catcher. There is a special added bonus: The optionally available stainless steel base provides for a clearance between the sandy riding ground and the vase - which will therefore remain clean and chic, even after many horses have galloped by.

- Extraordinary design object for horse-show grounds
- **Areas of application: Horse-show grounds, stable alleys, spectator areas**

By using products of Conradi+Kaiser you not only provide an all over safe surrounding for horses. With the products made from rubber granulate you can redesign the complete outdoor area of your riding establishment. You will thus achieve a consistent appearance with these design objects, which are exceptionally appealing and practical at the same time.



+ Optional: Stainless Steel Base

Vase linea

500 x 500 x 500 mm

Also in small size a perfect accessory for unique floral arrangements or plain and sober plants. The vase linea 500 mm high is pleasing to look at anywhere.

- Small and flexible
- Ideal for terraces and spectator areas
- **Areas of application:**
Riding grounds, stable alleys, spectator areas



Vase arundo

Ø 600 x 1000 mm

Its elegant design makes the vase arundo an absolute eye-catcher on riding arenas or as a very attractive design element during horse shows.

- incorporates an ornamental ring and a supporting base
- modern design
- insulating: Permanent protection for the plants
- **Areas of application:**
Riding areas, stable alleys,
spectator areas



The floor vases from Conradi+Kaiser are not only convincing by their phantastic appearance, they are also the all-rounder for the design of riding areas. Completely made from rubber granulate, they are absolutely frost resistant, they protect plants against low temperatures and even withstand horse hooves.



Vase arundo

Ø 600 x 750 mm

As a medium high variant with a height of 750 mm the vase arundo is the all-rounder for stylish upgrading of outdoor areas in riding establishments. Modern and timeless it adapts to every ambience.

- unique design object for riding establishments
- includes ornamental ring
- **Areas of application: Riding areas, stable alleys, spectator areas**



Vase arundo

Ø 600 x 500 mm

Impressive emphasis can also be achieved by the small vase arundo with its height of 500 mm. It is a small plant container, which can be displayed in a flexible way to present either abundant floral arrangements or hardy plants.

- small and flexible
- includes ornamental ring
- **Areas of application: Riding areas, stable alleys, spectator areas**



EXPERTS FOR EQUESTRIAN FLOORING SYSTEMS

Business partners, as well as owners of equestrian centres worldwide rely on the know-how of Conradi+Kaiser. For more than 30 years, we have been leading in the development of unique products for animal husbandry and have developed innovative products according to the latest medical findings. Conradi+Kaiser products can be found in riding centres around the world. In Abu Dhabi, high class Arabian horses are training on our flooring-systems, in Germany, horsemen as Paul Schockemöhle, as well as the national and state training centre of Rhineland-Palatinate are working with the innovative C+K products.



CONTACT

Service-Hotline +49 2689 9580-0



Conradi+Kaiser GmbH
Gewerbegebiet Larsheck
56271 Kleinmaischeid
Tel. +49 (0) 2689 9580-0
Fax +49 (0) 2689 9580-50
info@conradi-kaiser.de
www.conradi-kaiser.de

3/2018 – All rights and product modifications reserved. We will not assume liability for misprints. Deviations in colours are technically conditioned and do not constitute reason for complaints.

Credits:

Credits: S.1 fotolia.com, purplequeue; S.7 istock.com, larn; S.18/19 istock.com stockshares, S.24 istock.com photography-wildlife-de, S.28/29 istock.com Zoran Kolundzija; S. 31 istock.com ChrisBoswell; S.46/47 istock.com Somogyvari



Conradi+Kaiser GmbH
Gewerbegebiet Larsheck
56271 Kleinmaischeid
Tel. +49 (0) 2689 9580-0
Fax +49 (0) 2689 9580-50
info@conradi-kaiser.de
www.conradi-kaiser.de